

Technical Information .ZACK Theater

Dimensions

<u>Area</u>	<u>Width</u>	<u>Length</u>	<u>Height</u>
Stage	30'0"	20'0"	Rise 3'1" Downstage of on Stage Columns: 22'11" Upstage of on Stage Columns: 9' 11¼"
House	63'3"	39'5"	12'10"-26'2"
On Stage Columns	1'9"	1'9"	9' 11¼"
House Columns	2'0"	2'0"	12'10"
Double Doors	5'10"	-	7'11'
Single Doors	3'4"	-	6'10 1/4 "

<u>From</u>	<u>To</u>	<u>Distance</u>
SL Onstage Pillar	SR Onstage Pillar	15'8 ¼"
SL Pillar	SL Lip of Stage	5'6"
SR Pillar	SR Lip of Stage	5'6"
SL Pillar	DS Lip of Stage	5'4"
SR Pillar	DS Lip of Stage	5'4"
SL Pillar	US Back Wall	12'11"
SR Pillar	US Back Wall	12'11"
HL Pillar	Stage	13'1"
HC Pillar	Stage	13'1"
HR Pillar	Front of House Wall	19'1"
HL Pillar	HL Wall	18'3"
HL Pillar	HC Pillar	15'5"
HC Pillar	HR Pillar	15'5"
HR Pillar	HR Wall	8'2"

HL Pillar	Back of House Wall	18'2"
HC Pillar	Back of House Wall	18'2"
HR Pillar	Back of House Wall	18'5"
Stage Floor	DS Truss	11'10"
Stage Floor	US Truss	8'2"
House Floor	FOH Pipe	18'4"
House Floor	Top of Tech Balcony Railing	18'4"

Seating

The .ZACK Theater Space features customizable seating setups. "Base Seating" refers to the standard seating setup that allows for the most seats with the most direct sight lines.

<u>Seating Setup</u>	<u>House Capacity</u>
Base Setup	145 Seats
Max Capacity Setup	204 Seats

Lighting

<u>Instruments</u>	<u>Quantity</u>
Chauvet COLORado 1 LED Instrument (RGB) (Special Data and Power Cables)	6
Chauvet COLORdash Batten-Tri LED Instrument (RGB)	9
ETC Source Four Ellipsoidal (19 degree Barrels)	4
EVE E-100Z 100W 14-30 LED Zoom	8
Par 38 (House Lights)	8



KRANZBERG ARTS
FOUNDATION



Kranzberg Arts Foundation
3224 Locust St. Suite 401
St. Louis, MO 63103
info@kranzbergartsfoundation.org
(314) 533-0367

<u>Controls/Dimming</u>	<u>Quantity</u>
ETC Element 40 Light Board	1
20" LED Backlit LCD Monitor	1
Elation Opto Brand 4. Optical Splitter (4 Way DMX Booster)	2
Levitation D4DMX 2000W Max Dimmer Pack	4
ETC Smartmodule 2 4-Channel Dimmer Pack	1

<u>Frames</u>	<u>Quantity</u>
ETC Source Four Ellipsoidal Gel Frames	4
EVE E-100Z LED Zoom Gel Frames	8
EVE E-100Z Gobo Holders (M-Size)	8
COLORado Gel Frame Holders	22
ETC Source Four Gobo Holders	3
Par 38 Gel Frames	8

<u>DMX Cables</u>	<u>Quantity</u>
5' 3-Pin	12
25' 3-Pin	5
50' 3-Pin	1
5' 5-Pin	3
25' 5-Pin	4
50' 5-Pin	2
105' 5-Pin	1
125' 5-Pin	2

3-Pin (f) to 5-Pin (m) DMX Turnaround	2
COLORado Data (m) to 3 Pin (f) Turnaround	9
COLORado Data (f) to 3 Pin (m) Turnaround	10

<u>Power Cables and Accessories</u>	<u>Quantity</u>
3' Edison Extension	1
6' Edison Extension	9
10' Edison Extension	4
15' Edison Extension	1
10' 3-Output Edison Extension Cube Tap	7
COLORado Power Cable to Edison Turnaround	1
Edison (M) to IEC (F) Cable	22
IEC (M) to IEC (F) Cable	15
IEC (F) to European Standard (M)	1
IEC (F) to British Standard (M)	1
Spare "Mega" Clamps	11
Spare C-Clamps	2
Spare Light-Duty C-Clamps	1
Spare Safety Cables	9

Audio

<u>Speakers and Mixing Equipment</u>	<u>Quantity</u>
Midas M32 Mixing Console	1
Midas DL32 Stage Box	1
VP7212MDP Stage Monitor	4
JBL VP 7212/95DP Load Speakers (House Speakers)	4
JBL VPSB7118DP Subwoofer	1
Direct Box	4
Shure SRH 440 Professional Studio Headphones	1
RCA to 1/8 Aux Cable	1

<u>Microphones</u>	<u>Quantity</u>
SM 58	2
SM 57	4
SM81 Condenser Mic	2
BETA 52 A Kick Drum Mic	1
Shure Wireless Handheld	2
QLXD1 Wireless Body Mic	2
BETA 98 H/C Instrument Mic	2

<u>Microphone Stands</u>	<u>Quantity</u>
Straight Stands	6
Drum Miking Stand	4
2 Section Boom Stand	8

<u>Cables</u>	<u>Quantity</u>
10' XLR	7
15' XLR	8
25' XLR	9
50' XLR	9
100' XLR	2
10' ¼ Inch	4

Other Theater Space Assets

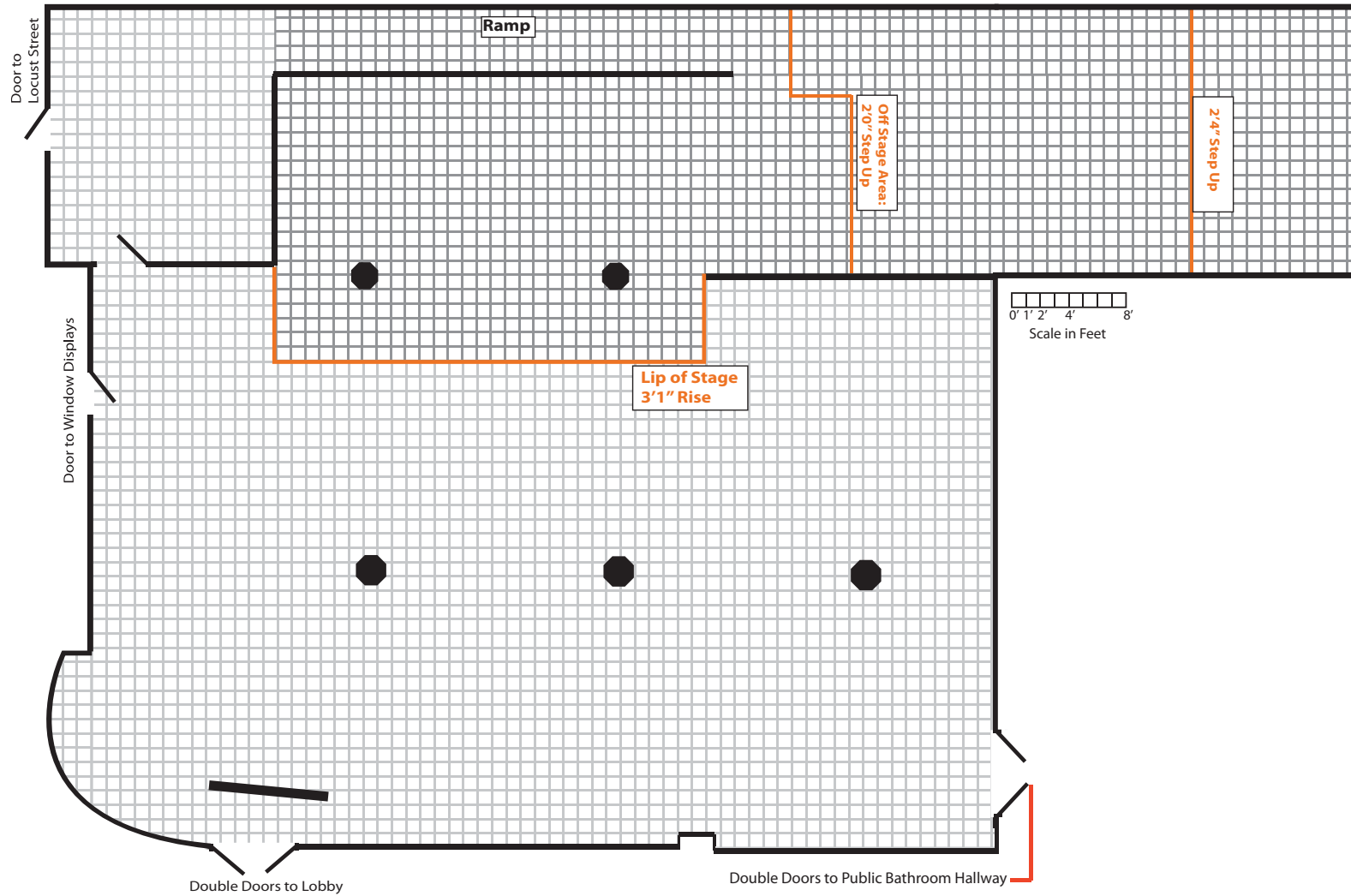
Professional Grade WUXGA Multimedia Projector	1
HDMI over Single Cat6 Extender With HDMI Cable	2
Motorized Projector Screen	1
12' A-Frame Ladder	1
10' A-Frame Ladder	2
8' A-Frame Ladder	1
6' A-Frame Ladder	1
Step Unit House Level to Stage Level	1
Step Unit Stage Level to SL Offstage Area Level	1
Curtain Track	1
9'2" Tall x 8'0" Wide Curtain	2
9'2" Tall x 9'0" Wide Curtain	2
7" Tablet, Android Operating System	1

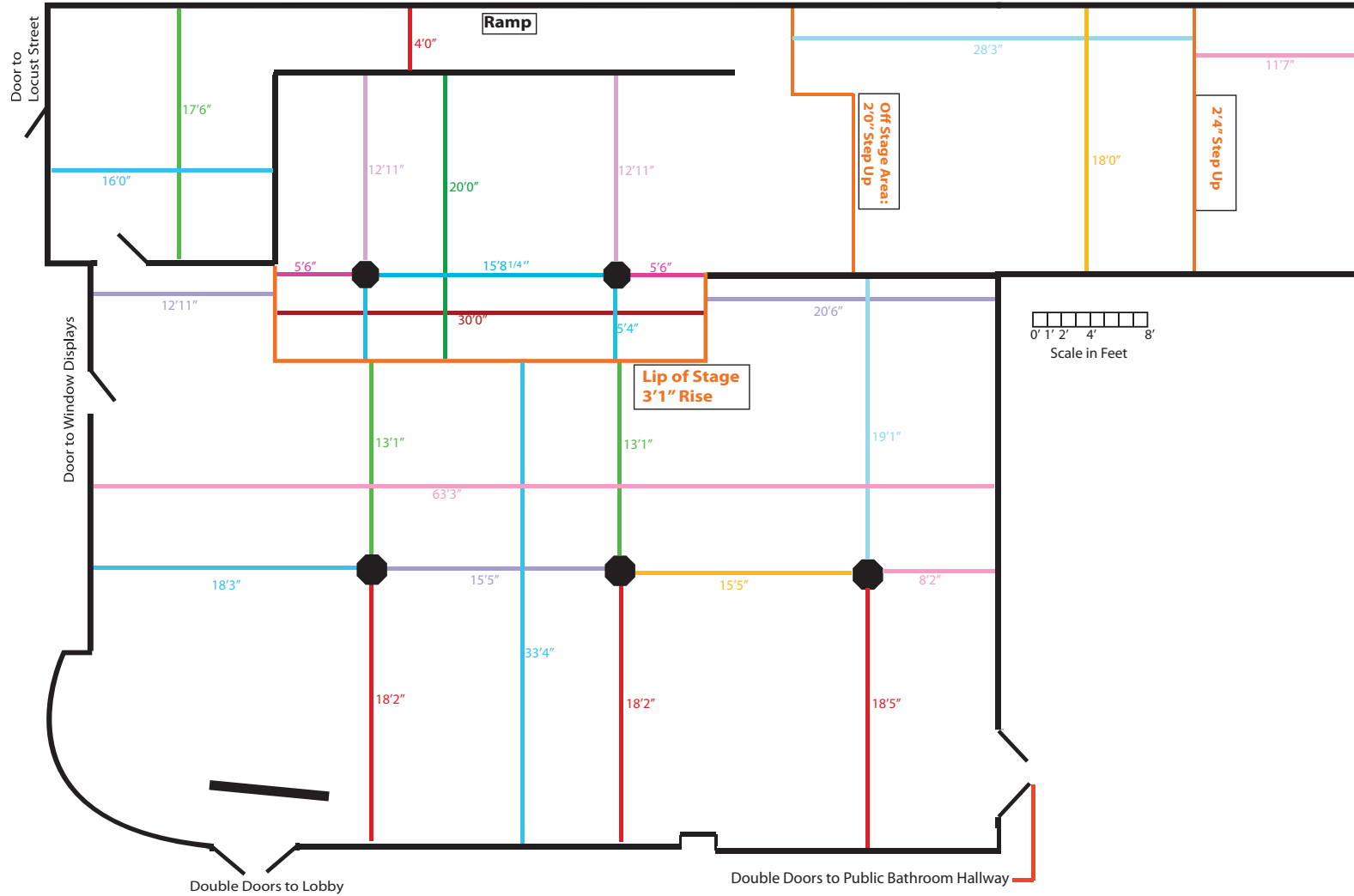


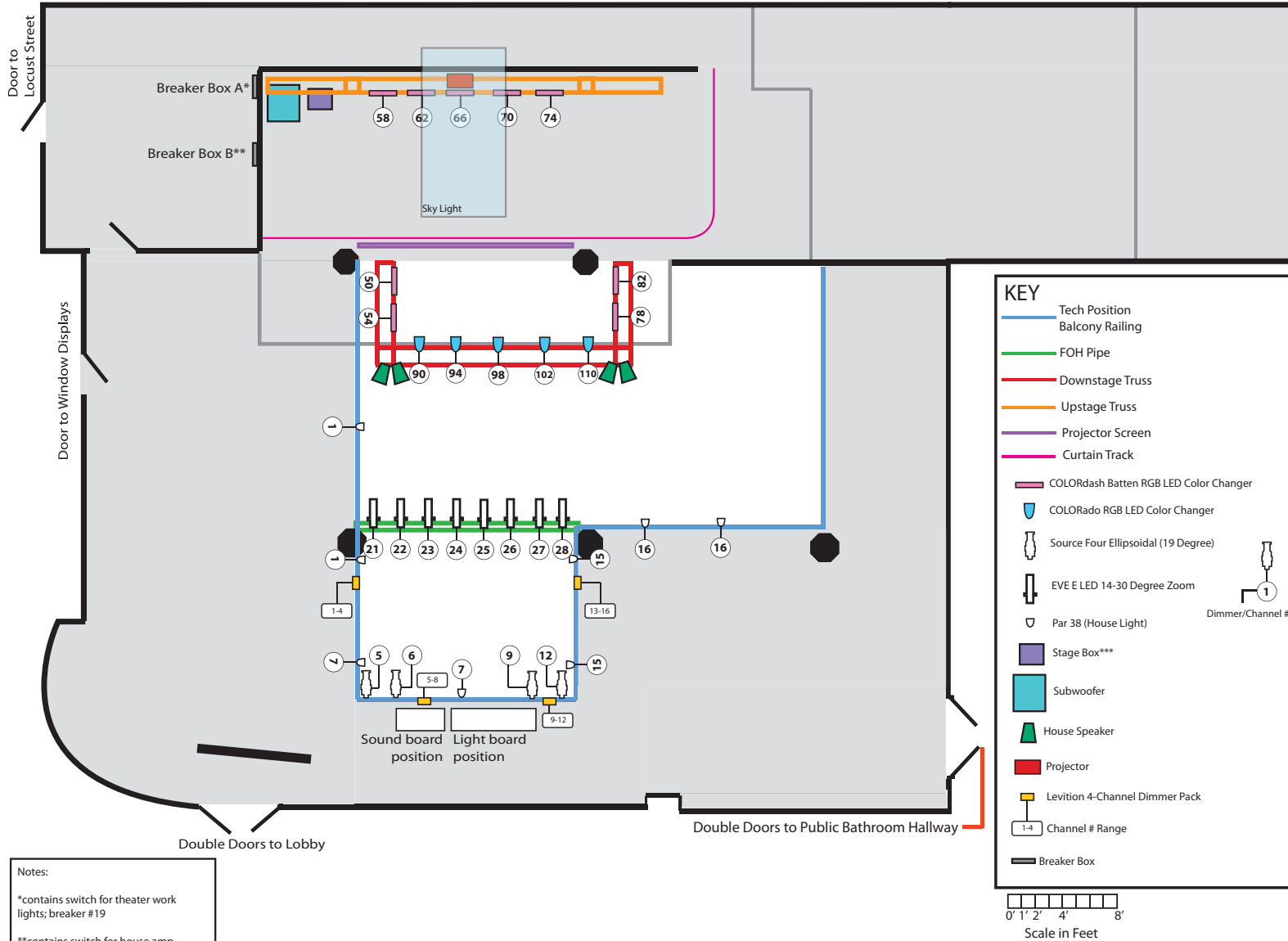
KRANZBERG ARTS
FOUNDATION



.ZACK Theater Ground Plan

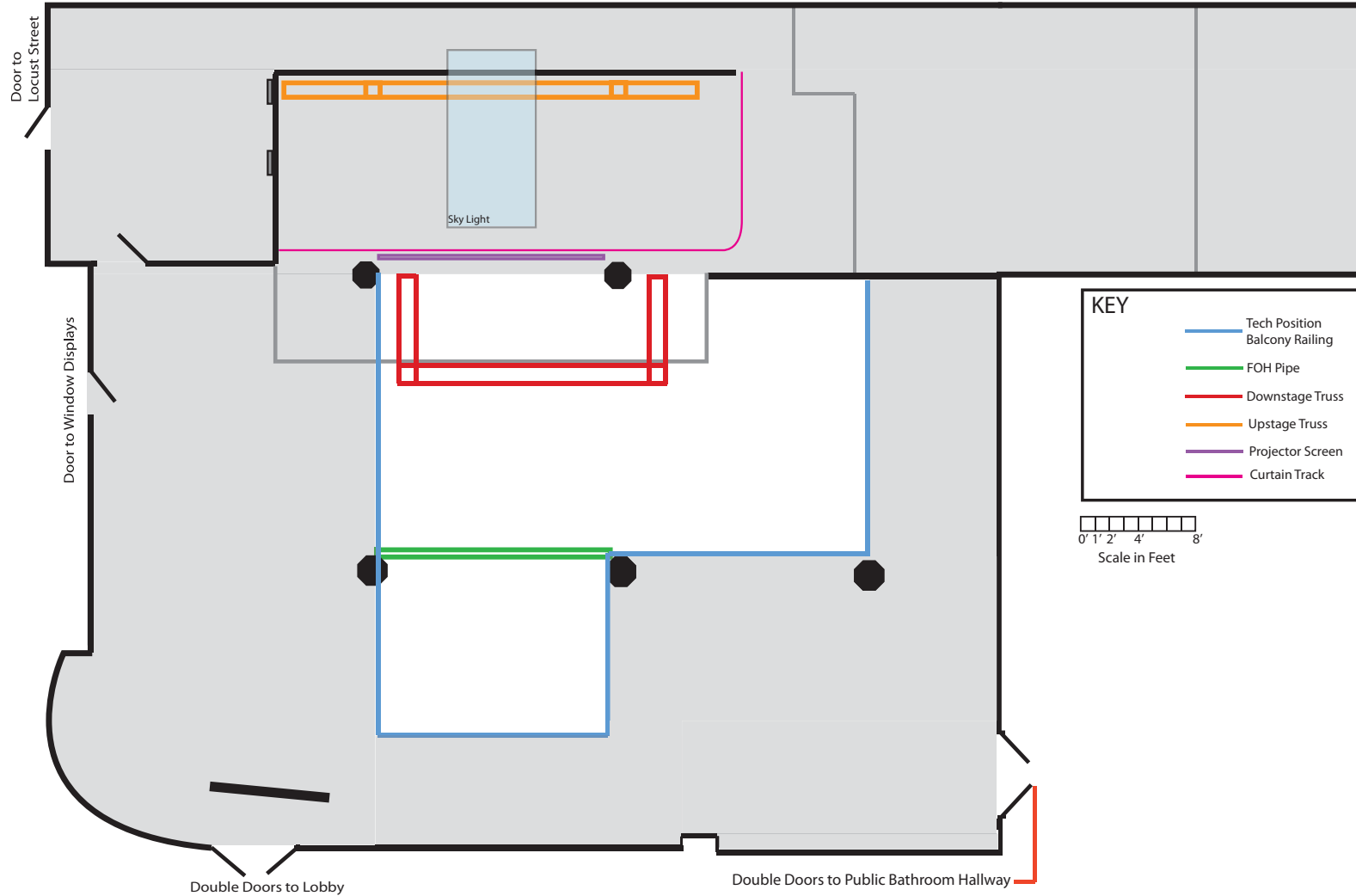






Notes:

- *contains switch for theater work lights; breaker #19
- **contains switch for house amp power; breakers 14, 16, 18, 20, 22
- ***inputs 1-8 are local at sound board, 9-32 are patched to this box

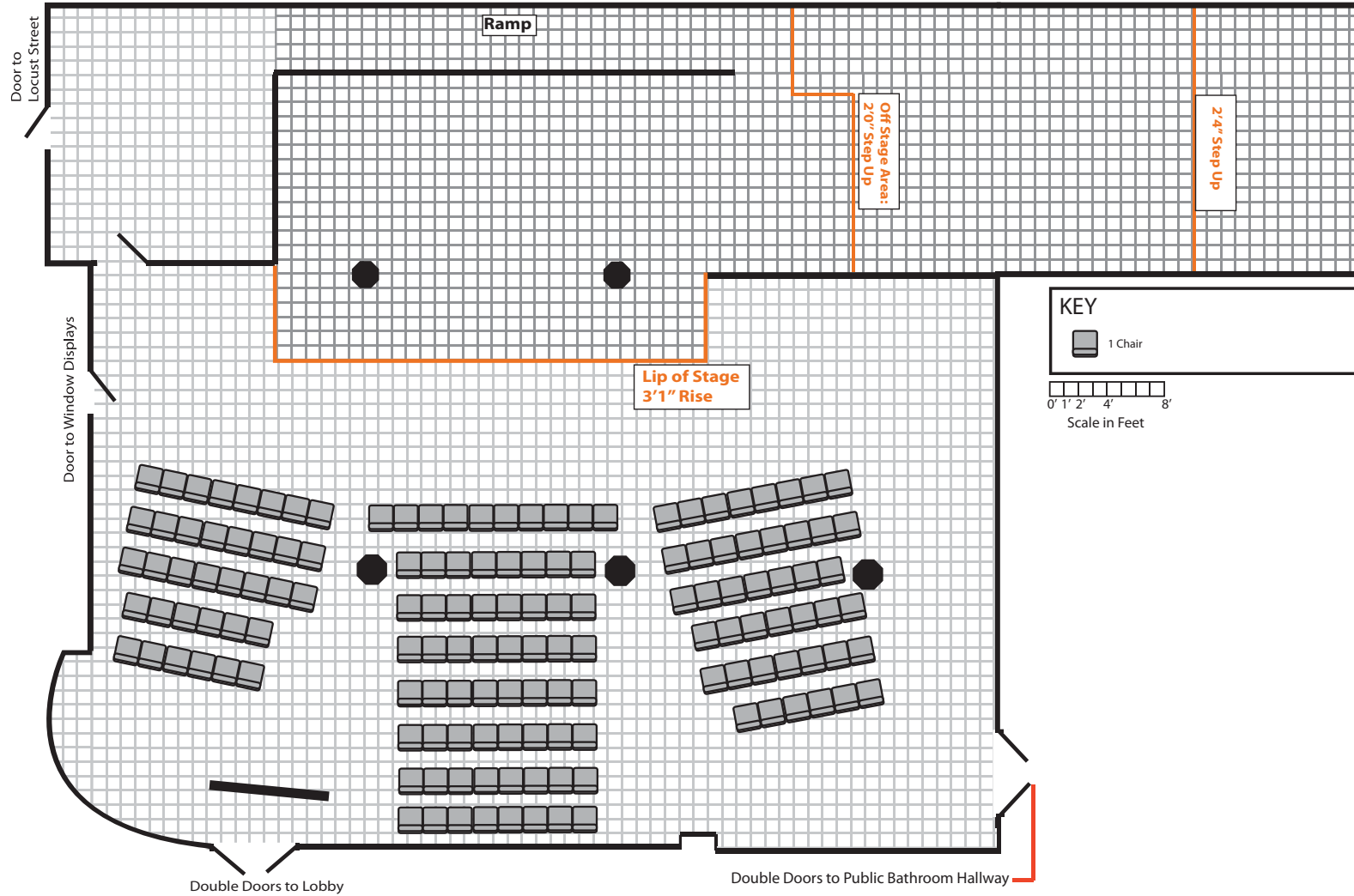




KRANZBERG ARTS
FOUNDATION



.ZACK Theater
Base Seating Configuration
145 Seats





**KRANZBERG ARTS
FOUNDATION**



.ZACK Theater Maximum Seating Configuration 204 Seats

